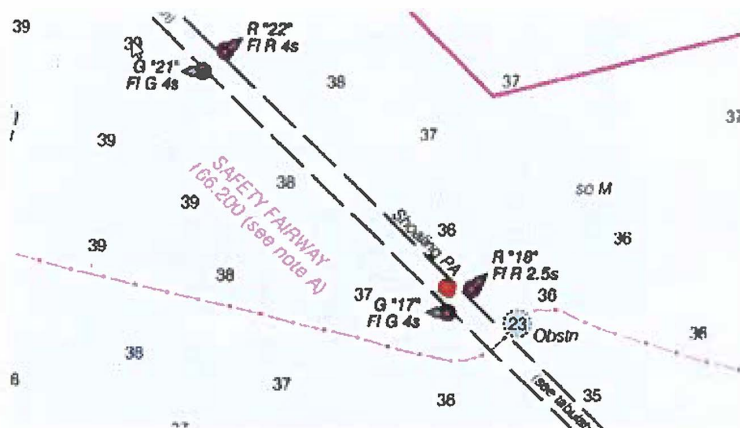




## Marine Safety Information Bulletin 46-20 October 20, 2020

### Obstruction Sabine Bank Channel - Rig JASMINIA Update 2

The large semi-submersible rig JASMINIA remains stationary in Sabine Bank Channel near gated buoys 17 and 18. Salvage operations are ongoing. Personnel are on board the rig energizing and configuring equipment. The Captain of the Port (COTP) has established a 250-yard moving safety zone around the rig.



The U.S. Army Corps of Engineers has surveyed the area outside the federal channel to 600-feet on both sides of the channel and a distance of 1-mile parallel to the channel. Survey assets remain on standby to survey the channel once the rig has been relocated. The Captain of the Port has reviewed the surveys, consulted with the Sabine Pilots and approved a plan to run two test ships at 36'6" and 36'8" under ideal hydrological conditions. The test runs were successful.

Therefore, the COTP, in consultation with the Sabine pilots has approved the movement of vessels with drafts of 36-feet or less, day or night, with a positive 1-foot tide. The COTP will entertain movement requests exceeding the 36-foot limitation on a case-by-case basis after consultation with the pilots and vessel master.

Survey data is posted on the U.S. Army Corps of Engineers website ([https://www.swg.usace.army.mil/Portals/26/docs/Navigation/Channel Survey Maps/SN/SP\\_02\\_OBK.pdf](https://www.swg.usace.army.mil/Portals/26/docs/Navigation/Channel%20Survey%20Maps/SN/SP_02_OBK.pdf)) and VTS Port Arthur website (<https://www.atlanticarea.uscg.mil/Our-Organization/District-8/District-Units/Sector-Houston-Galveston/Units/VTS-Port-Arthur/Downloads/>).

The Port Arthur Captain of the Port will continue to host Port Coordination Team (PCT) calls each day until the channel is open to marine traffic.

This notice will be posted on the **HOMEPORT** website <http://homeport.uscg.mil> and the **VTS Port Arthur** website at <https://www.atlanticarea.uscg.mil/vtspportarthur/>. If you have any questions, please call MSU Port Arthur at (409) 723-6500 or MSU Lake Charles at (337) 912-0073.



**M. A. Wike**  
**Captain, U. S. Coast Guard**  
**Captain of the Port**